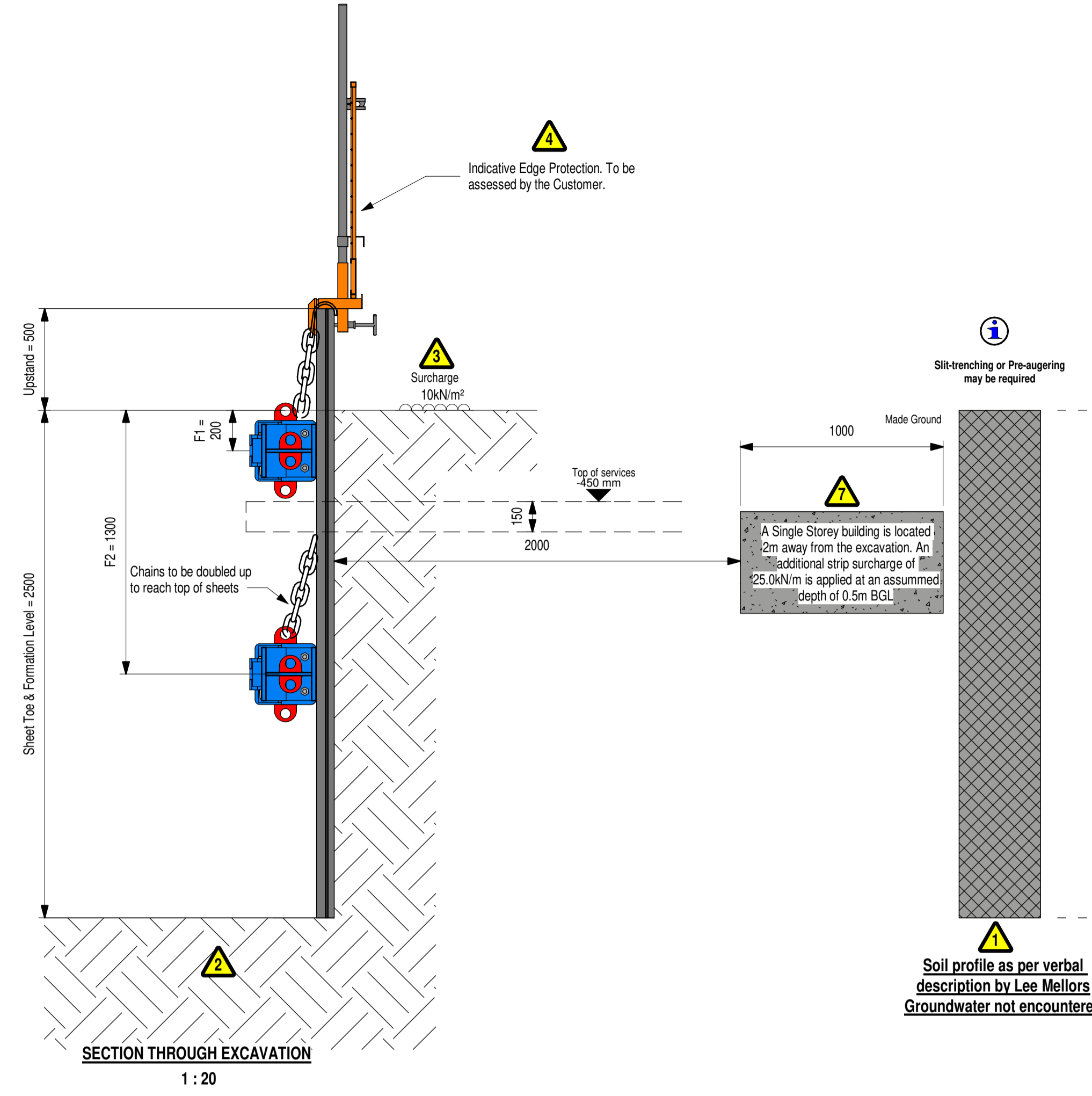


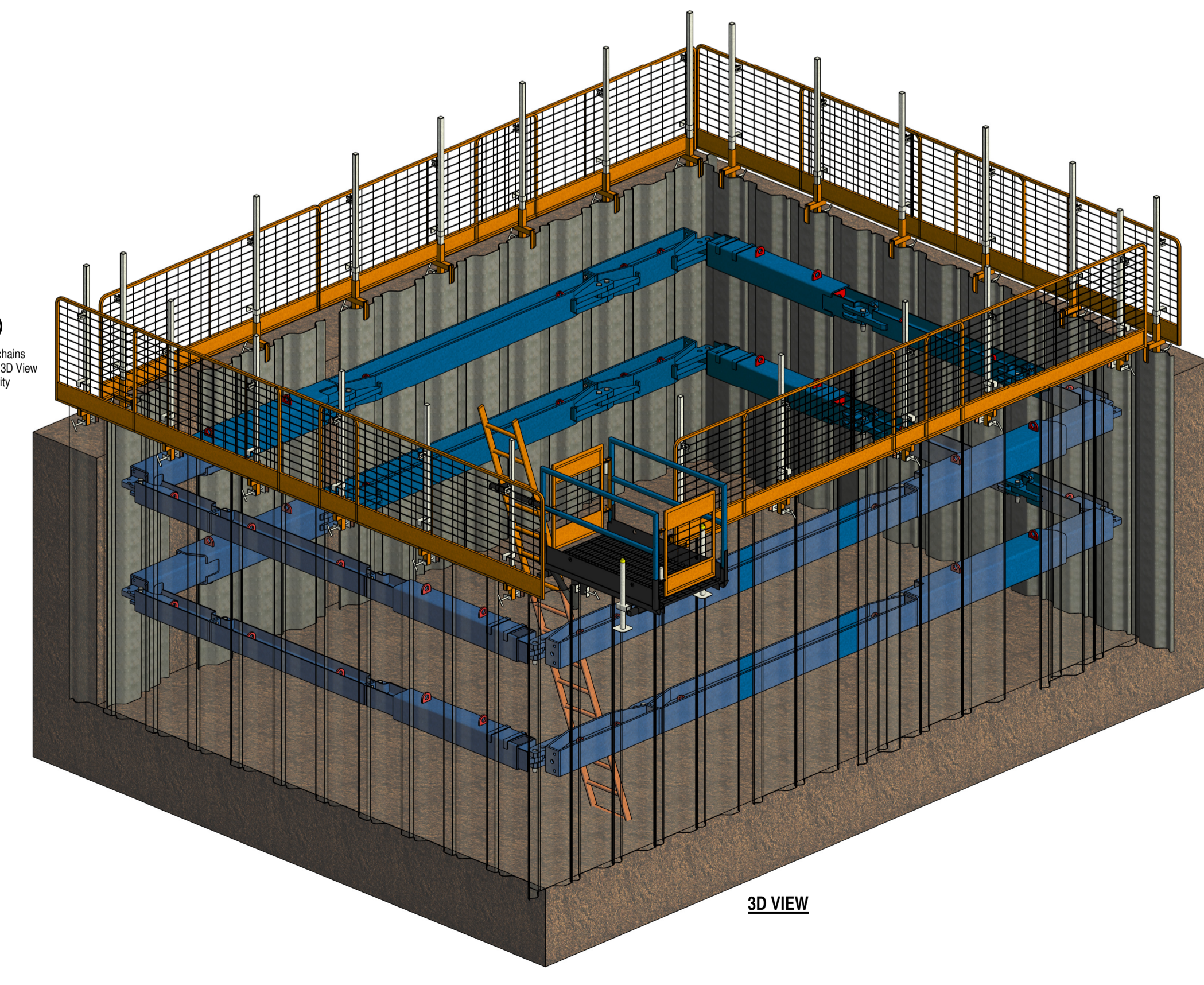
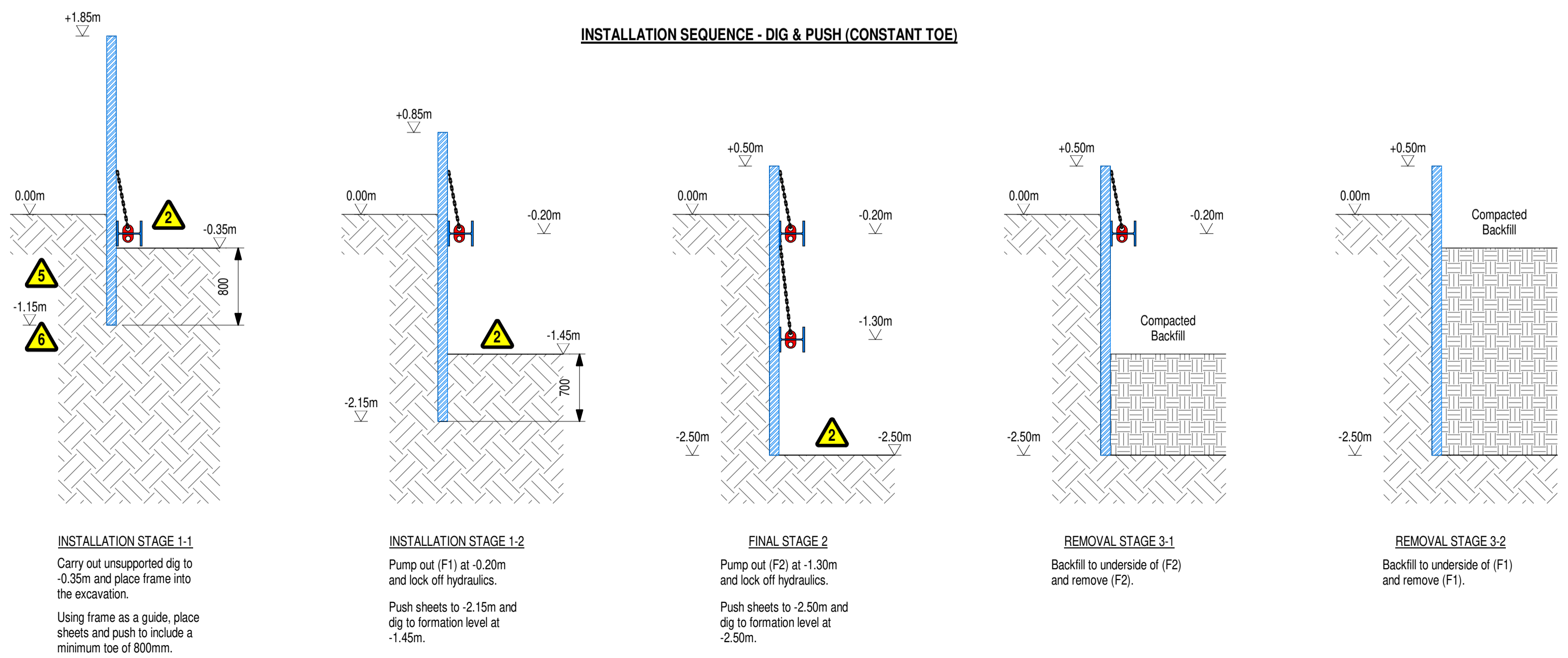
PLAN VIEW ON FRAME F1 & F2  
1 : 30



SECTION THROUGH EXCAVATION  
1 : 20

PARTS LIST					
Part No.	Description	Item Wt (kg)	Qty	Product Group	Total Wt (kg)
<b>Frame 1</b>					
SHBL-L300	Leg Arrangement (5.122-6.122m Sheet to Sheet)	602.0	2	Shaftbrace	1204.0
MBRACE-07	Leg Arrangement (7.25m - 8.25m Sheet to Sheet)	1328.8	2	Multibrace	2657.6
			4		3861.6
<b>Frame 2</b>					
SHBL-L300	Leg Arrangement (5.122-6.122m Sheet to Sheet)	602.0	2	Shaftbrace	1204.0
MBRACE-07	Leg Arrangement (7.25m - 8.25m Sheet to Sheet)	1328.8	2	Multibrace	2657.6
			4		3861.6
<b>Trench Sheets / Sheet Piles</b>					
M12-3	M12 Lapped Trench Sheet - 3000mm	95.4	50	Trench Sheets	4770.0
			50		4770.0

PARTS LIST - ANCILLARY ITEMS					
Ancillaries may differ from what is supplied. Customer to check with MHL hire desk to confirm which ancillaries have been supplied.					
Part No.	Description	Item Wt (kg)	Qty	Product Group	Total Wt (kg)
<b>Ancillary Items</b>					
PETPUMP-KIT	Installation Kit with Petrol Pump	244.0	1	Ancillary Item	244.0
M12-DC	M12 Drive Cap c/w Lifting Ring	26.6	1	Ancillary Item	26.6
EGRS	Euro Ground Release Shackie	17.5	1	Ancillary Item	17.5
M8/M12-EXT-SC	Trench Sheet Extractor c/w Chain - M12+ (Various)	17.0	1	Ancillary Item	17.0
	Lifting Chains (Depot to select)	0.0	1	Ancillary Item	0.0
<b>Design Charge</b>					
ENG-G0(S)	Engineering Charge Groundworks - 4 Hours	0.0	1	Design Charge	0.0
<b>Edge Protection</b>					
EP-SHEETPLAT	Ladder Access Platform For Sheets	226.0	1	Mabey Sheet Guard	226.0
LADDERSMS	5m Steel Ladder	23.0	1	Ladders	23.0
EP-UNIPNL-2.9	Universal Barrier Panel - 2900mm	21.5	12	Mabey Sheet Guard	258.0
EP-PLATGATE	Universal Platform Gate	11.0	1	Mabey Sheet Guard	11.0
EP-UNIPOST	Universal Barrier Post	9.5	24	Mabey Sheet Guard	228.0
EP-UNIBRKT	Universal Post Bracket	5.0	24	Mabey Sheet Guard	120.0



3D VIEW

- GROUNDWORKS
- NOTES:
- All dimensions in millimetres unless stated otherwise. **DO NOT SCALE!**
  - This drawing is the property of Mabey Hire Ltd and is supplied subject to Mabey Hire Ltd's normal trading terms and conditions - it is not to be reproduced in any part or form without the consent of Mabey Hire Ltd's Engineering Department.
  - All proprietary equipment must be used in accordance with the Mabey Hire Ltd's recommendations.
  - This design is based on the relevant design brief, if any information included within the design is not accurate, please notify Mabey Hire Ltd prior to commencement.
  - Excavation duration is not to exceed 12 weeks.
  - Overdig has not been considered in the design.
  - The blanket surcharge allows for construction plant loading of up to 30T/m² positioned no closer than 1.0m to the excavation edge.
  - Unless otherwise stated within the design, all hydraulic elements of the frame are to be installed to a pressure of 1000psi, irrespective of what is stated in the user guide.
  - Edge Protection, Ladder Access & Fall Arrest System are shown as an indicative detail on the drawing, and no site specific assessment has been performed by Mabey Hire Ltd. Customer is to perform an assessment of the site conditions and ensure that the ancillaries that have been quoted for / supplied are adequate.

SHEET INFORMATION			
M12 Lapped Trench Sheet			
Section Modulus (cm³)	Moment of Inertia (cm⁴)	Working Stress (N/mm²)	Weight per Metre (kg/m)
182.0	796.0	235.0	31.8
Weight per Straight Metre (kg/m)	Working Bending Moment (kNm/m)	Lengths Available (m)	
57.80	42.7	2.0 - 8.0	

RESIDUAL RISKS

- SEE TEMPORARY WORKS DESIGN REPORT FOR DETAILED DESCRIPTION OF RESIDUAL RISKS
- Ground Conditions:** Ground conditions should match the soil profile and be monitored as the excavation progresses.
  - Overdig:** Controls are to be put in place to ensure excavation limits are not exceeded.
  - Surcharge:** Customer to ensure specified surcharges have not been exceeded. Spill should be placed outside the zone of influence of the excavation (45° from toe level).
  - Excavation Operational Safety:** Customer to ensure that adequate measures are put in place for access, egress, edge protection, fall arrest and gas monitoring if required.
  - Lack of Sheet Embedment:** Customer to ensure specified sheet embedment is achieved.
  - Sheet Installation:** Customer is to assess drivability of the sheet and assess potential ground movement due to vibration.
  - Integrity of Adjacent Infrastructure:** Customer is to monitor and assess adjacent infrastructure for any signs of damage.
  - Gaps in Sheets:** Customer to close off any unsupported ground with a suitable method and transfer the loading to the adjacent sheets.

RESTRAINT CHAIN KEY

Numbers shown in the symbol refers to the quantity of chains at that position

Symbol	Description
	9mm Restraint Chain - 2.0T (SHBP-189)

P01	FIRST ISSUE - Outline Scheme	AM	24/06/24
REV	REVISION DETAILS	DR	DATE

**mabeyhire**  
Temporary works. Trusted solutions.

**Head Office**  
Scout Hill, Ravensthorpe, Dewsbury,  
West Yorkshire, WF13 3EJ,  
United Kingdom  
Tel: +44 (0) 1924 598 757  
www.mabeyhire.co.uk

TITLE:	Manhole Repair
PROJECT:	Moor End Houses Silkstone Common, S75 4QZ
CLIENT:	Alliance Contracting Solutions Ltd
PROJECT DESIGNER:	Abdirizak Mohamed
DRG. STATUS:	S3 PRELIMINARY
DRG. SCALE(S):	AS SHOWN PAPER SIZE: A1
DRAWN BY:	AM DATE: 24/06/2024
CHECKED BY:	AR DATE: 24/06/2024
MABEY PROJECT No:	922145
DRAWING NUMBER:	922145-MAB-XX-XX-D-C-0001
REV:	P01